

AUTOMOTIVE ACCESSORIES

# SIRIUS TK301



INDICATORE



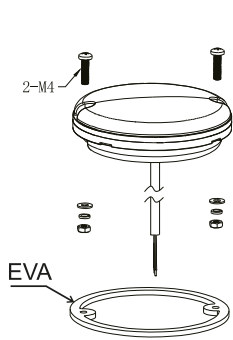
POSIZIONE  
FRONTALE



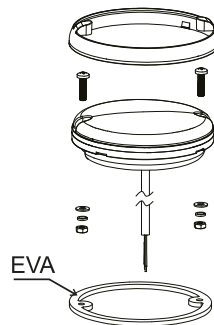
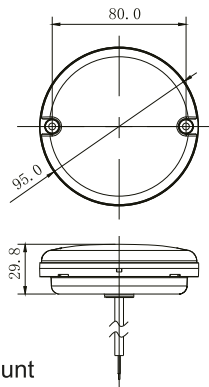
DRL



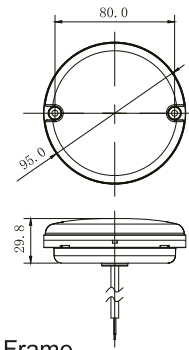
Anteriore | FRONT



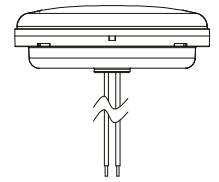
Screw Mount



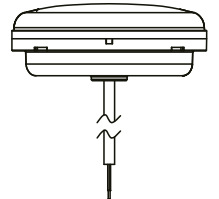
Chrome Frame



Wire



Cable



ROSSO / RED  
BIANCO / WHITE  
GIALLO / YELLOW  
NERO / BLACK

POSIZIONE FRONTALE / FRONT POSITION  
DRL / DRL  
INDICATORE DI DIREZIONE / D. I.  
MASSA / GND

## Dettagli tecnici / Technical details

**Diametro / Diameter:** Ø 95x29.8 mm

**Voltaggio / Voltage:** 12-24V

**Certificazione / Certificate:** R10

**Funzione / Function:** Indicator, Front position, DRL

**Tipo di fissaggio / Mount:** Screw Mount

**Connessione / Connection:** Wire, 300mm

**Waterproof IP:** IP67

**Materiale / Housing Materials:** ABS

**Temperatura di esercizio / Operating Temperature:** 40 C°+65 C°



COMPATIBILITÀ / COMPATIBILITY



INDICATORE DI DIREZIONE / D. I.



POSIZIONE FRONTALE / TAIL



DRL / DRL

